

**The power of
the SUN for the
FUTURE of our PLANET**



Solar for everybody

The future is solar for everybody

At Solplanet, we are driven by a simple idea: solar for everybody. We strive to create the best possible experience for distributors, installers and end users. That's why our products are easy-to-install, reliable and user-friendly.

Solplanet photovoltaic inverters are manufactured in compliance with international high-quality standards. Our annual production capacity exceeds 20 GW. So, chances are we can meet your demand.

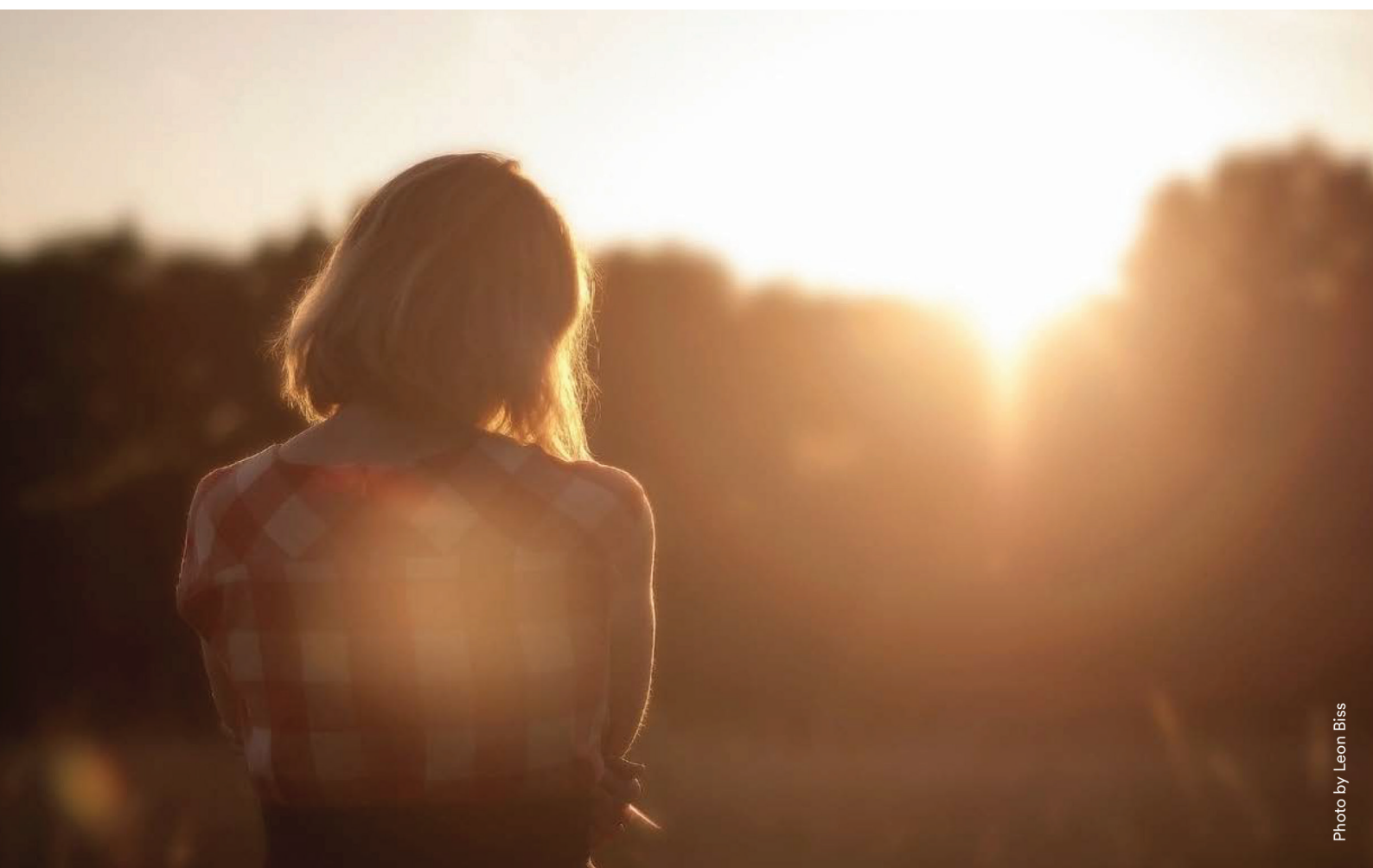


Photo by Leon Biss

You can depend on Solplanet

Solplanet is a brand of AISWEI, which is formerly known as SMA's Chinese subsidiary and has successfully been manufacturing high-quality and reliable products for renowned brands like SMA and Zegersolar.

Today, AISWEI is a leading R&D and manufacturing company focusing on clean energy. Headquartered in Shanghai, China, with three R&D centers, one manufacturing base, and offices in Asia, Europe, South America, Africa, and Oceania, AISWEI and Solplanet serve customers in many countries and regions across the globe.

Solplanet makes things easy

Solplanet products are easy-to-install, reliable and user-friendly. We offer a variety of quality products with industry leading warranties that you can depend on: single phase inverters, three phase inverters and connect & monitoring products. In addition we also offer our new hybrid inverters.

Three phase On-grid inverter 10 kW

ASW LT-G2 Pro Series



Model:
ASW10K-LT-G2 Pro

Easy-to-install

- Quick & easy-to-install with basic tools
- Quick setup and commissioning with Solplanet apps
- Compact wall mount design

Reliable

- International quality standards
- 150 % PV array oversizing for higher yields
- IP66 rated design for outdoor use

User-friendly

- User friendly app interface
- Max.20 A input current, ideal for bifacial and large area PV modules
- Wide MPP voltage range 150 V - 1000 V
- ShadeSol shadow management

Technical Datasheet

ASW10K-LT-G2 Pro

Input (DC)	Max. PV array power	15000 Wp STC
	Max. input voltage	1100 V
	MPP voltage range / rated input voltage	150 V to 1000 V / 630 V
	Min. input voltage	125 V
	Initial. feed-in voltage	180 V
	Max. operating input current	20 A / 16 A
	Max. short circuit current	30 A / 25 A
	No. of independent MPPT inputs / strings per MPPT input	2 / A:1; B:1
Output (AC)	Rated active power	10000 W
	Rated apparent power	10000 VA
	Max. apparent power	10000 VA
	AC nominal voltage	220 V / 380 V 230 V / 400 V 240 V / 415 V
	AC voltage range	160 V to 300 V
	AC grid frequency / range	50 Hz / 45 Hz to 55 Hz 60 Hz / 55 Hz to 65 Hz
	Max. output current	16 A
	Adjustable power factor range	0.8 leading to 0.8 lagging
	Feed-in phases	3 / 3-N-PE
	Harmonic distortion (THD) at rated output	< 3%
	Efficiency & Protection	Max. efficiency / European efficiency
DC Switch		
Ground fault monitoring / grid monitoring		/
DC reverse polarity protection / AC short circuit protection		/
All-pole-sensitive residual-current monitoring unit		
Arc fault circuit interrupter (AFCI)		
Anti-Islanding protection		
Night monitoring		
Surge protection		/ Type II
Protection class (according to IEC 62109-1) / overvoltage category (according to IEC 62109-1)		I / AC : III ; DC : II
General data	Dimensions (W / H / D)	503 / 435 / 183 mm
	Weight	16 kg
	Operating temperature range	-25°C ... +60°C
	Self-consumption (at night)	< 1 W
	Topology	Non-isolated
	Cooling concept	Natural Convection
	Degree of protection (according to IEC 60529)	IP66
	Climatic category (according to IEC 60721-3-4)	4K4H
	Max. permissible value for relative humidity (non-condensing)	100 %
	Max. operating altitude	3000 m
Features	DC connection	Plug-in connector
	AC connection	Plug-in connector
	Mounting type	Wall-mount bracket
	LED indicators (Status / Fault / Communication)	
	Communication interface ¹	/ / / (RS485 / Wi-Fi / LAN / 4G)
	Country of Manufacture	China
	Certificates and approvals (more available on request)	CE, EN50549, G98/99, VDE-AR-N4105, AS/NZS 4777, C10/C11, VFR 2014 & UTE C15, IEC62109, IEC62116, IEC61727, IEC61683, IEC60068, IEC61000, NB/T 32004

Standard features / optional features / – not available

¹ Zero export installations supported with 2-pin RS485 for connection to approved smart meters

Data at nominal conditions. All information is subject to change.

Three phase On-grid inverters 15kW and 20 kW

ASW LT-G2 Pro Series



Models:

ASW15K-LT-G2 Pro

ASW20K-LT-G2 Pro



Easy-to-install

- Quick & easy-to-install with basic tools
- Quick setup and commissioning with Solplanet apps
- Compact wall mount design



Reliable

- International quality standards
- 150 % PV array oversizing for higher yields
- IP66 rated design for outdoor use



User-friendly

- User friendly app interface
- 20 A input current, ideal for bifacial and large area PV modules
- Wide MPP voltage range 150 V - 1000 V
- ShadeSol shadow management

Technical Datasheet

		ASW 15K-LT-G2 Pro	ASW 20K-LT-G2 Pro
Input (DC)	Max. PV array power	22500 Wp STC	30000 Wp STC
	Max. input voltage	1100 V	1100 V
	MPP voltage range / rated input voltage	150 V to 1000 V / 630 V	150 V to 1000 V / 630 V
	Min. input voltage	125 V	125 V
	Initial. feed-in voltage	180 V	180 V
	Max. operating input current	32 A / 20 A	32 A / 32 A
	Max. short circuit current	48 A / 30 A	48 A / 48 A
	No. of independent MPPT inputs / strings per MPPT input	2/A:2; B:1	2 / A:2; B:2
Output (AC)	Rated active power	15000 W	20000 W
	Rated apparent power	15000 VA	20000 VA
	Max. apparent power	15000 VA	20000 VA
	AC nominal voltage	220 V / 380 V 230 V / 400 V 240 V / 415 V	220 V / 380 V 230 V / 400 V 240 V / 415 V
	AC voltage range	160 V to 300 V	160 V to 300 V
	AC grid frequency / range	50 Hz / 45 Hz to 55 Hz 60 Hz / 55 Hz to 65 Hz	50 Hz / 45 Hz to 55 Hz 60 Hz / 55 Hz to 65 Hz
	Max. output current	24 A	31.9 A
	Adjustable power factor range	0.8 leading to 0.8 lagging	0.8 leading to 0.8 lagging
	Feed-in phases	3 / 3-N-PE	3 / 3-N-PE
	Harmonic distortion (THD) at rated output	< 3 %	< 3 %
	Efficiency & Protection	Max. efficiency / European efficiency	98.6% / 98.2 %
DC Switch		●	●
Ground fault monitoring / grid monitoring		● / ●	● / ●
DC reverse polarity protection / AC short circuit protection		● / ●	● / ●
All-pole-sensitive residual-current monitoring unit		●	●
Arc fault circuit interrupter (AFCI)		○	○
Anti-Islanding protection		●	●
Night monitoring		●	●
Surge protection		● / Type II	● / Type II
Protection class (according to IEC 62109-1) / overvoltage category (according to IEC 62109-1)		I/AC: III; DC :II	I/AC: III; DC :II
General data	Dimensions (W / H / D)	503 / 435 / 183 mm	503 / 435 / 183 mm
	Weight	17 kg	17 kg
	Operating temperature range	-25°C ... +60°C	-25°C ... +60°C
	Self-consumption (at night)	< 1 W	< 1 W
	Topology	Non-isolated	Non-isolated
	Cooling concept	Active cooling	Active cooling
	Degree of protection (according to IEC 60529)	IP66	IP66
	Climatic category (according to IEC 60721-3-4)	4K4H	4K4H
	Max. permissible value for relative humidity (non-condensing)	100%	100%
	Max. operating altitude	3000 m	3000 m
Features	DC connection	Plug-in connector	Plug-in connector
	AC connection	Plug-in connector	Plug-in connector
	Mounting type	Wall-mount bracket	Wall-mount bracket
	LED indicators (Status / Fault / Communication)	●	●
	Communication interface ¹	● / ● / ○ / ○ (RS485 / Wi-Fi / LAN / 4G)	● / ● / ○ / ○ (RS485 / Wi-Fi / LAN / 4G)
	Country of manufacture	China	China
	Certificates and approvals (more available on request)	CE, EN50549, IEC62109, IEC62116, IEC61727, IEC61683, IEC60068, IEC61000, AS/NZS4777, C10/C11	

Standard features / optional features / – not available

¹Zero export installations supported with 2-pin RS485 for connection to approved smart meters

Data at nominal conditions. All information is subject to change.

Three phase On-grid inverter 30 kW

ASW LT-G3 Series



Model:
ASW30K-LT-G3



Easy-to-install

- Quick & easy-to-install with basic tools
- Quick setup and commissioning with Solplanet apps
- Compact wall mount design



Reliable

- International quality standards
- 150 % PV array oversizing for higher yields
- IP66 rated design for outdoor use



User-friendly

- 20 A input current, ideal for bifacial and large area PV modules
- 3 MPPTs for flexible PV array design
- Wide MPP voltage range 180 V - 1000 V
- ShadeSol shadow management

Technical Datasheet

ASW 30K-LT-G3

Input (DC)	Max. PV array power	45000 Wp STC
	Max. input voltage	1100 V
	MPP voltage range / rated input voltage	180 V - 1000 V / 630 V
	Min. input voltage	160 V
	Initial. feed-in voltage	200 V
	Max. operating input current	32 A / 32 A / 32 A
	Max. short circuit current	48 A / 48 A / 48 A
	No. of independent MPPT inputs / strings per MPPT input	3 / A:2;B:2;C:2
Output (AC)	Rated active power	30000 W
	Rated apparent power	30000 VA
	Max. apparent power	30000 VA
	AC nominal voltage	220 V / 380 V 230 V / 400 V 240 V / 415 V
	AC voltage range	180 V to 305 V / 312 V to 528 V
	AC grid frequency / range	50 Hz / 45 Hz to 55 Hz 60 Hz / 55 Hz to 65 Hz
	Max. output current	47.8 A
	Adjustable power factor range	0.8 leading to 0.8 lagging
	Feed-in phases	3 / 3-N-PE
	Harmonic distortion (THD) at rated output	< 3%
	Efficiency & Protection	Max. efficiency / European efficiency
DC Switch		●
Ground fault monitoring / grid monitoring		● / ●
DC reverse polarity protection / AC short circuit protection		● / ●
All-pole-sensitive residual-current monitoring unit		●
Arc fault circuit interrupter (AFCI)		○
Anti-islanding Protection		●
Night monitoring		●
Surge protection		● / Type II
Protection class (according to IEC 62109-1) / overvoltage category (according to IEC 62109-1)	I / AC: III; DC: II	
General data	Dimensions (W / H / D)	543 / 520 / 235 mm
	Weight	29 kg
	Operating temperature range	-25°C ... +60°C
	Self-consumption (at night)	< 1 W
	Topology	Non-isolated
	Cooling concept	Active cooling
	Degree of protection (according to IEC 60529)	IP66
	Climatic category (according to IEC 60721-3-4)	4K4H
	Max. permissible value for relative humidity (non-condensing)	100 %
	Max. operating altitude	3000 m
Features	DC connection	Plug-in connector
	AC connection	Plug-in connector
	Mounting type	Wall-mount bracket
	LED Indicators (Status / Fault / Communication)	●
	Communication interface ¹	● / ● / ○ / ○ (RS485 / Wi-Fi / LAN / 4G)
	Country of manufacture	China
	Certificates and approvals (more available on request)	CE, EN50549 ,IEC62109, IEC62116, IEC61727, IEC61000, NB/T 32004

Standard features / optional features / – not available

¹ Zero export installations supported with 2-pin RS485 for connection to approved smart meters



TRI-ANGELS ELECTRONICS

UAN: (021) 111-874-111

Website: trion.com.pk

After Sales Service Network

Company Owned Service Centers

- Karachi** – UAN 111-874-111 / 021-34380492 – Plot- A/34, Block- 7/8, 204, 2nd Floor Hafeez Centre, KCHS Off, Shahrah-e-Faisal, Karachi.
Islamabad – Mr. Imran – 0300-5056354 – L-84, Z.H Road. Rawalpindi
Multan – Mr. Waheed – 0306-7451405 – Shop # 383, 384, 385/A Shams Abad Colony Block A Opposite Jamia Masjid Mehria Multan
Lahore – Mr. Usman – 0324-4485945 – Saeed Apartments, 33/1 behind Queens Centre, Lahore
Faisalabad – Mr. Farhan – 0322-6069657 – House 178/1, Block A, Opposite Sadiqiya Masjid, Peoples Colony Num 01, Faisalabad.
Peshawar – Mr. Babar – 0313-9509875 – Hisense service center, Muslim Town 3, Northern Bypass Peshawar
Sialkot – Mr. Zaigham – 0336-6102030 – Taj Pura Street, Dara Araian, Near Multi Cable Office, Sialkot

Authorized Service Centers

- Attock** – Friends Electronics – Mr. Ahmad – 03016792380 – Kamra / Attock
Mandi Bahauddin – Ali Mumtaz Electronics – Mr. Mumtaz Hussain – 0333-8453058 – Alvi Chowk, Aziz Plaza, Mandi Bahauddin
Vehari – Irfan Electronics – Mr. Irfan – 03026873835 – 1st floor New Modern Tractor Multan Road Vehari
Sahiwal – Bilal Electronics – Mr. Bilal – 0301-6901180/03136910087 – Sahiwal Liaqat chowk
Bahawalpur – Al Saudia Electronics – Sheikh Abdul Hafeez – 062-2881487 – Trust Colony Circular Road, Bahawalpur
Hyderabad – Atif Electronics – Mr. Atif – 0333-2699157
Kohat – Junaid Stabilizer & Ups – Mr. Falak Sher – 0333-9646645 – Bukhari plaza purana Lari Adda Kohat
Mardan – Waqas Electronics – Mr. Waqas – 0304-1919026 – Haji Gul Plaza Sugar Mills Mardan